

BOOM

Concrete, Inc.

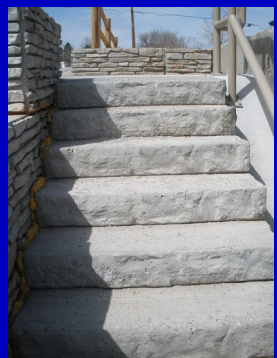
Boom Concrete, Inc.
220 Girard Avenue
PO Box 437
Newell, SD 57760

Toll Free: 800-464-2600
Telephone: 605-456-2600
Fax: 605-456-6060
Website: www.boomcon.com
Email: smorell@boomcon.com

January 1, 2016

Retaining Wall Block

Knob Style Landscape Block



Replace this...
with a BOOM!



\$100.00

Knob Full Block
Stacked Stone or Landscape Rock Face
4' long, 2' high, 2' deep; 2,250 lbs



\$65.00

Knob / Recess Top - Half Block
Stacked Stone or Landscape Rock Face
2' long, 2' high, 2' deep; 1,200 lbs/ 975 lbs



\$100.00

Recess Top
Stacked Stone or Landscape Rock Face
2' wide, 4' long, 2' high; 6" recess; 2,100 lbs



\$115.00

Knob / Recess Top - Corner Block
Stacked Stone or Landscape Rock Face
4' long, 2' high, 2' deep; 2,850 lbs/ 2,400 lbs



\$100.00

Knob / Recess Top - Sloped End Block
Stacked Stone or Landscape Rock Face
2' wide, 4' long, 2' high; 1,800 lbs

Landscape Step



\$40.00

Landscape Step
Stone Face
48" wide, 30" deep, 7" riser;
850 lbs
Stack to create steps

BOOM

Concrete, Inc.

Boom Concrete, Inc.
220 Girard Avenue
PO Box 437
Newell, SD 57760

Toll Free: 800-464-2600
Telephone: 605-456-2600
Fax: 605-456-6060
Website: www.boomcon.com
Email: smorell@boomcon.com

January 1, 2016

Mid-Size Retaining Wall Block

Mid-size Landscape Block



\$25.00

Mid-size Landscape Full Block
2' long, 1' high, 2' deep;
560 lbs.



\$19.00

Mid-size Landscape Short Block
2' long, 1' high, 1' deep;
375 lbs.

\$16.00

Mid-size Landscape Full Half Block
1' long, 1' high, 2' deep;
280 lbs.



\$14.00

Mid-size Landscape Short Half Block
1' long, 1' high, 1' deep;
150 lbs.



\$22.00

Mid-size Landscape Full Recess Top Block
2' long, 1' high, 2' deep; 6" recess;
425 lbs.

\$18.00

Mid-size Landscape Short Recess Top Block
2' long, 1' high, 1' deep; 6" recess;
275 lbs.

\$25.00

Sloped End Blocks / Corner Blocks
2' long, 1' high, 2' deep;
475 lbs.